



M.A.M. SCHOOL OF ENGINEERING

(ACCREDITED BY NAAC)

(Approved by AICTE, New Delhi and Affiliated to Anna University, Chennai)

SIRUGANUR, TRICHY - 621 105

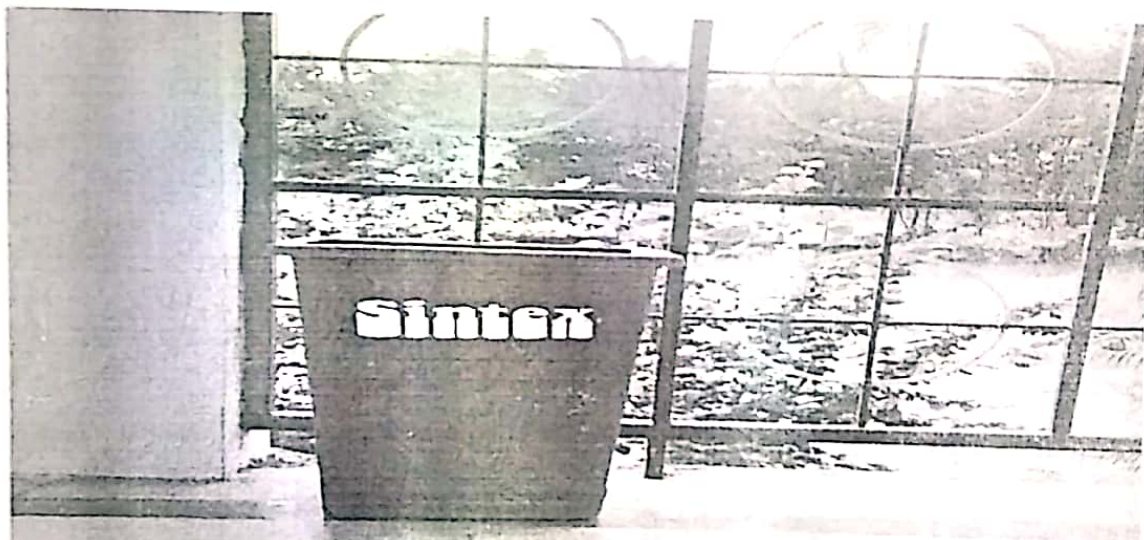
www.mamse.in

7.1.3 Describe the facilities in the Institution for the management of the following types of degradable and non-degradable waste (within 500 words)

- Solid waste management
- Liquid waste management
- Biomedical waste management
- E-waste management
- Waste recycling system
- Hazardous chemicals and radioactive waste management

SOLID WASTE MANAGEMENT

Solid wastes are collected at various places in the campus and they are properly disposed/reused as manures.



Tiruchirappalli, Tamil Nadu, India
Unnamed Road, Tamil Nadu 621105, India
Lat 10.996391°
Long 78.779092°
27/12/21 03:51 PM

PRINCIPAL

PRINCIPAL

M.A.M. SCHOOL OF ENGINEERING
SIRIGANUR, TIRUCHIRAPPALLI-621 105.



M.A.M. SCHOOL OF ENGINEERING

(ACCREDITED BY NAAC)

(Approved by AICTE, New Delhi and Affiliated to Anna University, Chennai)

SIRUGANUR, TRICHY - 621 105

www.mamse.in



Tiruchirappalli, Tamil Nadu, India
Unnamed Road, Tamil Nadu 621105, India
Lat 10.996466°
Long 78.779015°
27/12/21 03:50 PM

PRINCIPAL

PRINCIPAL
M.A.M. SCHOOL OF ENGINEERING
SIRIGANUR, TIRUCHIRAPPALLI-621 105.



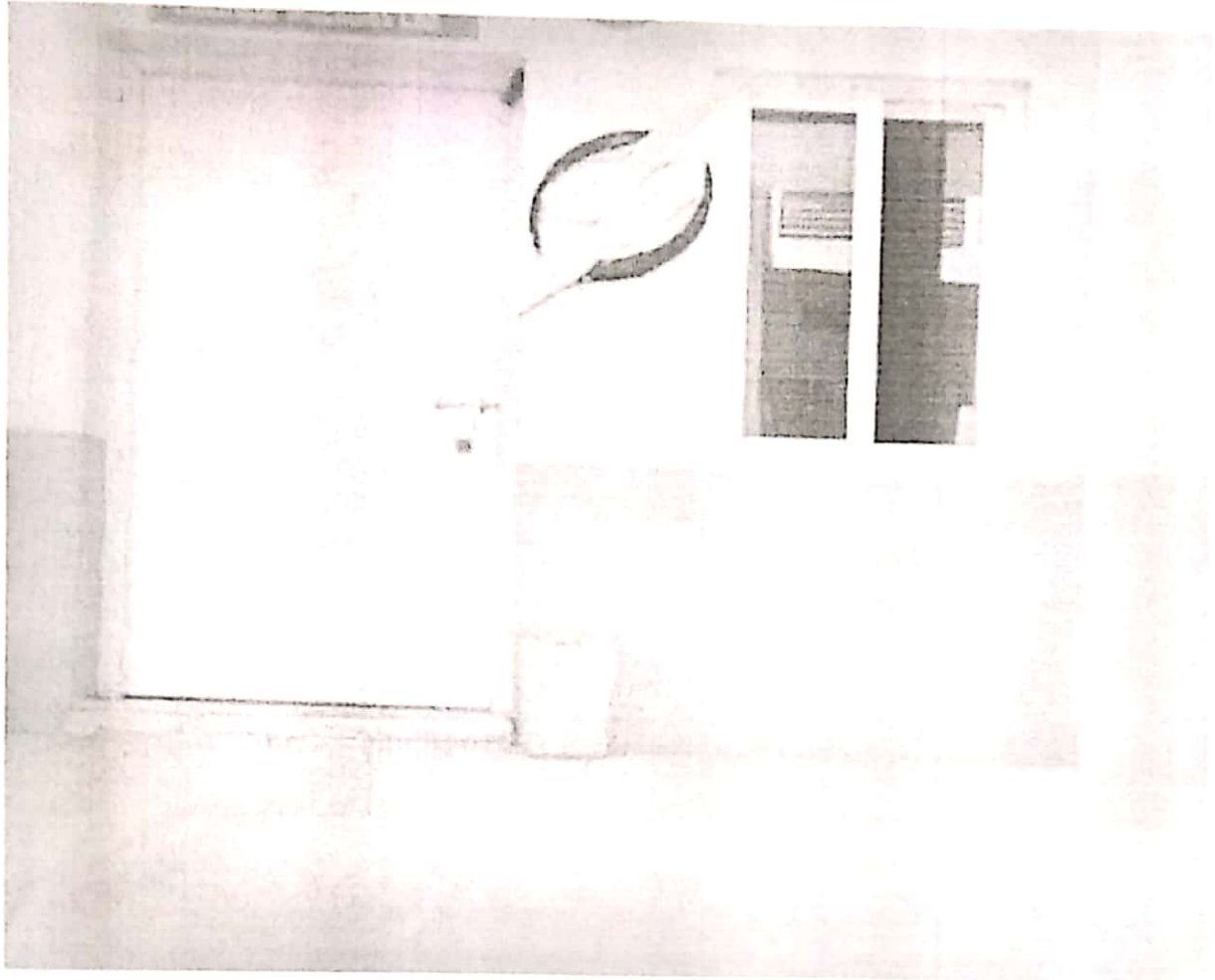
M.A.M. SCHOOL OF ENGINEERING

(ACCREDITED BY NAAC)

(Approved by AICTE, New Delhi and Affiliated to Anna University, Chennai)

SIRUGANUR, TRICHY - 621 105

www.mamse.in



PRINCIPAL

PRINCIPAL
M.A.M. SCHOOL OF ENGINEERING
SIRIGANUR, TIRUCHIRAPPALLI-621 105.



M.A.M. SCHOOL OF ENGINEERING

(ACCREDITED BY NAAC)

(Approved by AICTE, New Delhi and Affiliated to Anna University, Chennai)

SIRUGANUR, TRICHY – 621 105

www.mamse.in

LIQUID WASTE MANAGEMENT

Waste Water from the wash basins are used for watering the plants



PRINCIPAL

PRINCIPAL
M.A.M. SCHOOL OF ENGINEERING
SIRIGANUR, TIRUCHIRAPPALLI-621 105,



M.A.M. SCHOOL OF ENGINEERING

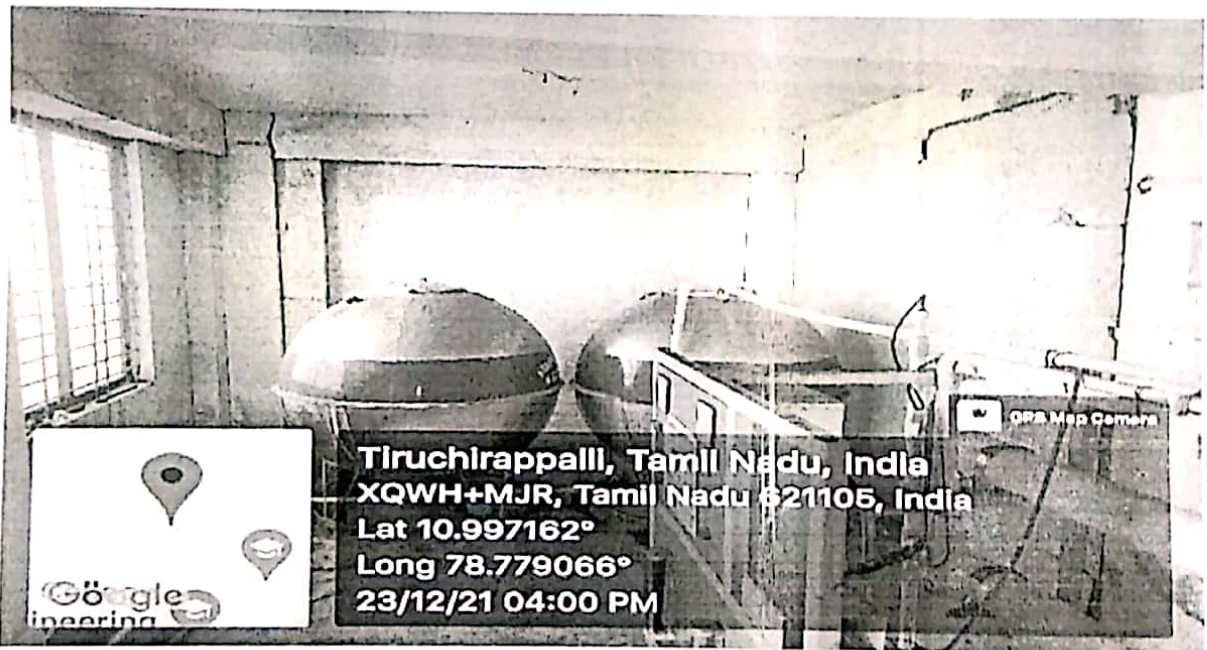
(ACCREDITED BY NAAC)

(Approved by AICTE, New Delhi and Affiliated to Anna University, Chennai)

SIRUGANUR, TRICHY - 621 105

www.mamse.in

RO PLANT



PRINCIPAL

PRINCIPAL
M.A.M. SCHOOL OF ENGINEERING
SIRIGANUR, TIRUCHIRAPPALLI-621 105,



M.A.M. SCHOOL OF ENGINEERING

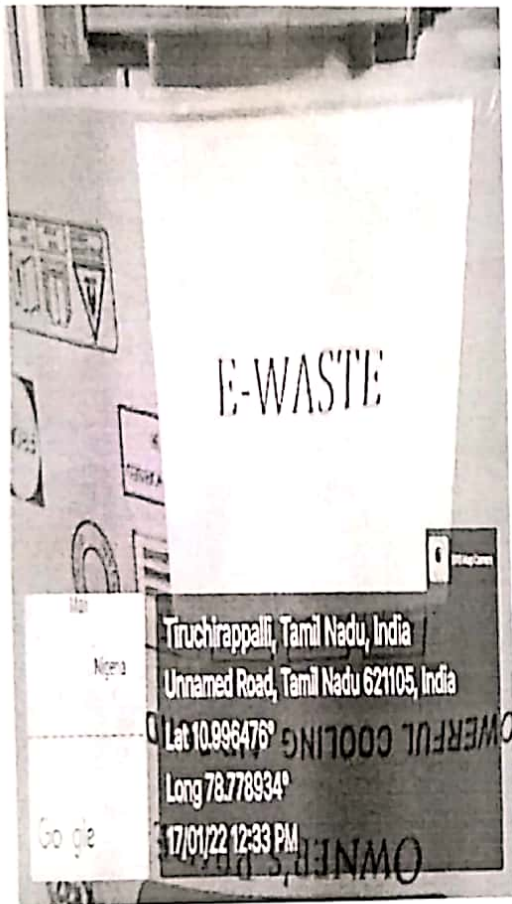
(ACCREDITED BY NAAC)

(Approved by AICTE, New Delhi and Affiliated to Anna University, Chennai)

SIRUGANUR, TRICHY - 621 105

www.mamse.in

E-WASTE MANAGEMENT



PRINCIPAL

PRINCIPAL
M.A.M. SCHOOL OF ENGINEERING
SIRUGANUR, TRICHIRAPPALLI-621 105.